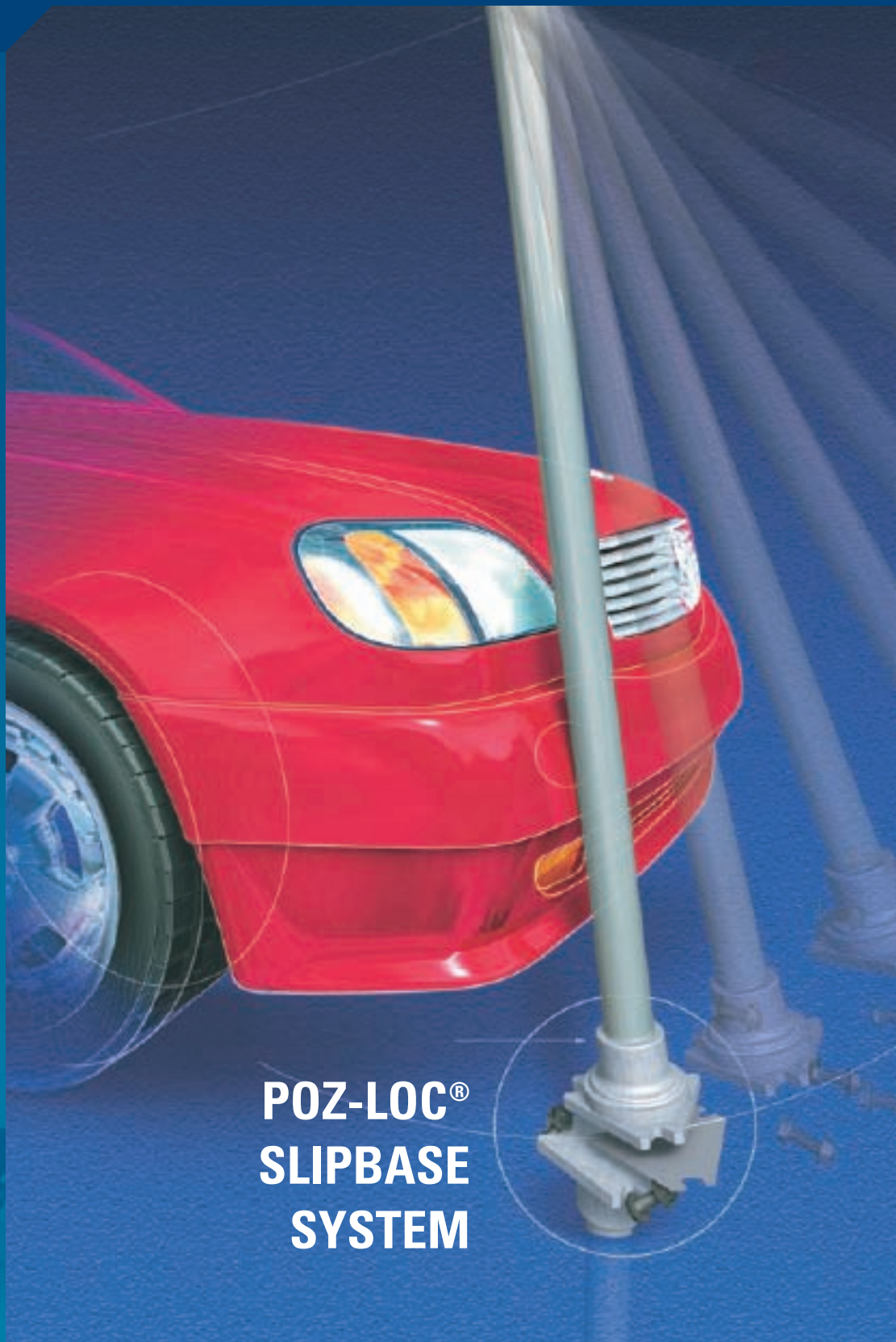


Now every signpost can break away, in order to minimize damage and maximize safety.

Our POZ-LOC® Slipbase Signpost System allows signposts to break away, improving safety, economy, and versatility.



**POZ-LOC®
SLIPBASE
SYSTEM**

REDUCE INJURIES, DAMAGE, AND COSTS.

Save lives. Our system of breakaway signposts is designed so that the signpost releases on impact from any direction and rotates clear of the impacting vehicle with minimal change in vehicle velocity. This greatly reduces the possibility of occupant injury. The POZ-LOC Slipbase System is NCHRP Report 350 compliant. Likewise, it meets or exceeds AASHTO requirements. It is FHWA approved.

Save money. Breakaway ability means most signpost components are reusable. Most often, damage is so minimal, signs can be reinstalled on the spot. Their galvanized composition assures a long life of service. Initial sign installation is easy and straightforward, and saves time too. The ability to mix and match components can reduce inventory costs.

Save time. A single Slipbase stub can be used with our galvanized 2 1/2" BWG 10 or Schedule 80 post. Bolt on our T-bracket or U-bracket in the shop or field to provide the stability needed by larger signs or multiple signs. That's flexibility. If there's pre-existing concrete, simply use the bolt-down stub.

Posts per ASTM A-513 and A-653 or A-500 Engineering Data For POZ-LOC® Post

POZ-LOC® Post Size	O.D.	Wall (Nominal)	Weight	Section Modulus	Yield Strength
2 1/2" BWG 10	2.875" (73.0 mm)	0.134" (3.4 mm)	3.92 lb/ft (6.15 kg/m)	0.754 in ³ 12.35 cm ³	55,000 PSI (375 Mpa)
2 1/2" NP-40	2.875" (73.0 mm)	0.160" (4.0 mm)	4.80 lb/ft		55,000 PSI (375 Mpa)
2 1/2" Schedule 80	2.875" (73.0 mm)	0.276" (7.1 mm)	7.66 lb/ft (11.41 kg/m)	1.339 in ³ 21.94 cm ³	46,000 PSI (314 Mpa)



Poz Loc Post Requirements: BWG 10 up to 21 square feet;
Sch. 80 up to 32 square feet (at 90 miles per hour wind loading).

Windload charts per AAHTO 2001 4th Edition Specification available on request.

POZ-LOC® SLIPBASE SYSTEM COMPONENTS



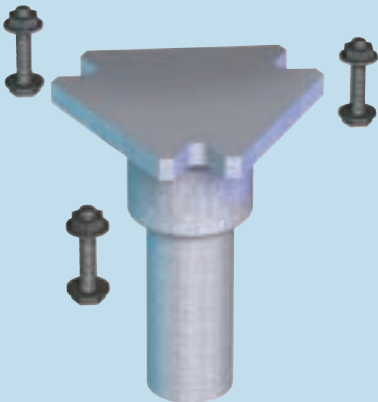
POST

Galvanized 2 7/8" OD traffic post in 3 wall thicknesses—BWG 10, NP 40, or Schedule 80.



PLATE

Galvanized steel bolt retainer plate



STUB & FASTENERS

Ground Stub 3" schedule 40 pipe, 36" hot dip galvanized with triangular plate welded to it.

Retainer Nuts & Bolts



1. Dig Hole 12" to 14" OD by 42" deep. Fill hole to ground level with concrete.



2. After inserting rebar through the ground stub, center in the hole and press base into center of concrete filled hole.



3. Level base 3" above ground line. Allow concrete to cure.



4. Install keeper plate and upper casting utilizing bolts per instructions. Tighten bolts to 60 ft/lbs minimum per instructions.



5. Attach the sign to the post, lift and insert post into casting. Align facing traffic.



6. Tighten bolts and set screws to minimum 60 ft/lbs minimum per instructions.

POZ-LOC Slipbase beats the preferred requirements of NCHRP Report 350 in occupant risk crash tests.



Crash Test at 20 mph
The post sign breaks away easily at a very low-speed impact.



It rotates harmlessly over the vehicle.



It falls away from the vehicle, eliminating the possibility of occupant injury.

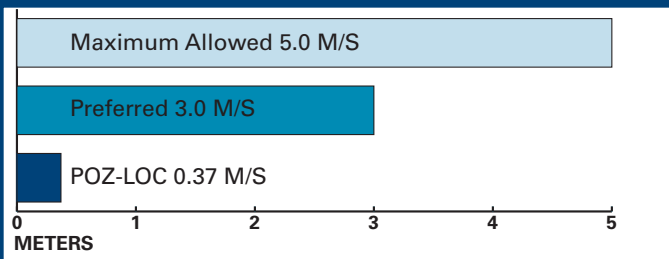


Impact causes minimal vehicle damage at 20 mph. The sign is undamaged after impact.

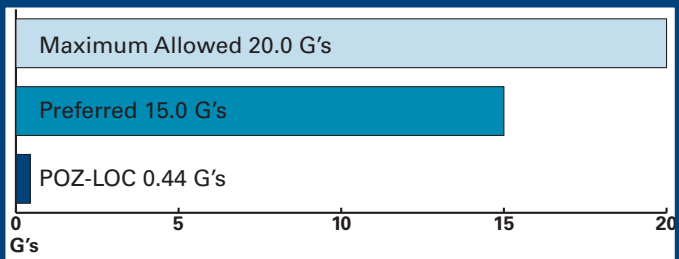


The slipbase assembly and sign posts, including the ground stub, are completely reusable.

Occupant Impact Velocity In M/S (Meters Per Second)



Occupant Ridedown Acceleration In G's



With flexibility to mix and match sign components, crews have what they need to handle diverse jobs.



The galvanized bolt-down stub is available for installations involving pre-existing concrete.



The Galvanized "T" & "U" sign support brackets are available to provide increased stability for large and multiple sign installations.

Northwest Pipe Company

Houston, Texas
800.369.5009

For more information about Northwest Pipe Traffic Systems, visit us at www.pozloc.com

For a closer look at the company you want to keep, visit us at www.nwpipe.com

For more detailed information, email us at tubularsales@nwpipe.com

01/06

