

SAVING LIVES BY DESIGN

SAFE-HIT

SURFACE MOUNT DELINEATORS

OVERVIEW

Safe-Hit Surface Mount Delineators are durable and flexible for multi-purpose use.

Safe-Hit's flexible posts rebound from multiple impacts, and are constructed of durable linear low density, co-extruded polyethylene with ultraviolet inhibitors. They are available with portable bases, surface mount bases or soil anchors. Safe-Hit posts feature a two piece, self-locking system that reduces installation and maintenance costs. The Safe-Hit Line is ideal for applications with average impact frequency.

FEATURES AND BENEFITS

- ▶ Delineating parking, construction zones, centerline medians and H.O.V. lanes.
- ▶ 1-3/4" inner tube provides superior rebound capability.
- ▶ Bases that feature either pin-lock or twist-lock systems.
- ▶ Posts that come in a variety of heights, shapes and colors to accommodate different reflective configurations.
- ▶ Bases capable of being reused when installed with butyl. Epoxy is recommended for permanent applications.
- ▶ Easy installation on asphalt or concrete.
- ▶ Twist-lock feature allowing quick replacement which reduces maintenance crew traffic exposure.
- ▶ Numerous reflective and decal options available.



WWW.SAFE-HIT.COM

SURFACE MOUNT POST TYPES



TYPE 1 HAZARD MARKER
Round post, flattened on top with black oval cap, three 3" (76.2mm) x 3" (76.2mm) reflective patches and Surface Mount Pin Lock Base.



TYPE 2 GUIDE POST
Round post, flattened on top with black oval cap, one 3" (76.2mm) x 9" (228.6mm) reflective strip and Surface Mount Pin Lock Base.

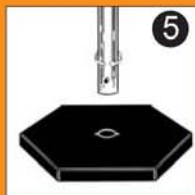
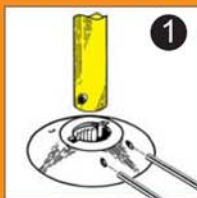


TYPE 3 CHANNELIZER
Round post with recessed cap, one 6" (152.4mm) reflective wrap and Surface Mount Pin Lock Base.



TYPE 5 MARKER POST
Round post with recessed cap, two 3" (76.2mm) reflective wraps and Surface Mount Pin Lock Base.

SURFACE MOUNT BASE OPTIONS



- 1 SMA SURFACE MOUNT PIN LOCK BASE**
Ideal for permanent installations
- 2 SLT SUB-LEVEL TWIST LOCK BASE**
Used when it is desirable to have base level with concrete or asphalt surface
- 3 SST SUB-SURFACE TWIST LOCK BASE**
Used when a low profile is desired due to vehicular or pedestrian traffic.
- 4 SMT SURFACE MOUNT TWIST LOCK BASE**
Used when posts must be installed, removed and re-installed periodically.
- 5 PSB PORTABLE BASE**
No anchor or adhesive required. Ideal for temporary applications. Base is 18lbs (8.165kg)

SPECIFICATIONS

| | |
|------------------------------|--|
| Overall Post Height | 46 cm - 122 cm (18 - 48") |
| Post Diameter | 5.7 cm (2.25") |
| Base Diameters: | |
| SMA | 20.32 cm (8") |
| SMT | 20.32 cm (8") |
| SST | 9.5 cm (3.75") |
| SLT | |
| Post Weight (91.44 cm / 36") | .50 kg (1.1 lbs) |
| Standard Post Colors | White, Yellow, Orange |
| Custom Post Colors | Light Gray, Dark Gray, Green, Blue, Black, Brown or Red |
| Reflective Sheeting | Standard high-intensity Silver, Amber or Orange. Other types and colors available. |
| Custom Base Colors | Yellow or Orange |
| Adhesives & Hardware | Epoxy, Butyl & Lag Screws |



Distributed By:

SAFE-HIT®



A Division of
ENERGY ABSORPTION
SYSTEMS, INC.

A Quixote Company

WWW.SAFE-HIT.COM

35 East Wacker Drive • Chicago, IL 60601
Tel: (800) 537-8958 • Fax: (800) 770-6755
www.quixtrans.com

General specifications for Safe-Hit Delineators are subject to change without notice to reflect improvements and upgrades. Additional information is available. Contact Safe-Hit for details.