

**NC-100™** (Count Only)

**NC-200™** (Count, Speed & Classification)

## PORTABLE TRAFFIC ANALYZER

**NC-100**  
**NC-200**

### OVERVIEW

The NC-100/200 Portable Traffic Analyzer is a self-contained unit that monitors traffic flow conditions around the clock, providing the data you need for accurate traffic analysis. Utilizing Vehicle Magnetic Imaging technology, the NC-100/200 records traffic conditions and exports them to Highway Data Management Software (HDM) for fast generation of charts, reports, histograms and graphs.

### FEATURES AND BENEFITS

- ▶ Easy and fast installation in roadway
- ▶ Durable extruded aluminum housing
- ▶ Long life, rechargeable, Lithium-ion battery
- ▶ 13 length classification bins
- ▶ No tubes, loops and chains

### APPLICATIONS

- ▶ Multi-Lane Highways
- ▶ City Streets
- ▶ Intersections & Turn Lanes
- ▶ Unimproved Road
- ▶ Construction Zones
- ▶ State & Recreational Parks
- ▶ Casinos & Sports Arenas
- ▶ Airports
- ▶ Military Bases
- ▶ Parking Lots & Garages



**NC-100/200**

**Quixote**  
Transportation Technologies, Inc.

[WWW.QTTINC.COM](http://WWW.QTTINC.COM)

# QTT NC-100 AND NC-200 SPECIFICATIONS

**Housing Material:** Extruded / anodized aluminum

**Ultimate Bearing Strength:** 88,000 psi (607 MPa)

**Dimensions:** 7.125 in. x 4.625 in. x 0.5 in.  
(181 mm x 118 mm x 12.7 mm)

**Weight:** 1.3 lbs (0.59 kgs)

**Electronic PCB:** Conformal coated and water resistant

**Operating Temperature:** -4°F to +140°F (-20°C to +60°C)

**Sensor:** GMR magnetic chip for Vehicle Magnetic Imaging

**Memory:** Micro Serial Flash: 3MB

**Battery/Power:** Lithium Ion Rechargeable  
3.0 - 4.20 Vdc, 3000 mAH at 23°C  
Nominal voltage 3.70 vdc  
Up to 21 days before recharge  
Automatic overcharge protection  
Field replaceable by customer

**Computed Values:** Imperial or Metric

**Roadway Occupancy:** Percent occupancy over report interval

**Count Period Frame Mode:** 1 to 120 min

**\* Capacity:** Up to 300,000 vehicles or 21 days per study, whichever occurs first

**Data Program/Read Rate:** 115K~9600 baud RS-232 user selectable

**Communication Link:** Standard RS-232  
USB adapter optional

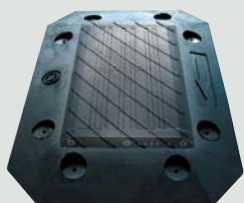
**Real-Time-Clock:** Yr, Mo, Day, Hr, Min, Sec

**\* Length Classification (% of Volume):** 13 bins (user selectable length range)

**\* Speed Class (% of Volume):** 15 bins (user selectable speed range)

**Vehicle Count Determination:** Automatic headway adjustment 8 - 120 mph (12.8 - 193 kph)  
<8 mph (12.8 kph) recorded as stopped vehicle

**\* APPLIES TO MODEL NC-200**  
Specifications subject to change without notice



## THE NC-100/200 PROTECTIVE COVER

The protective cover, specifically molded for the NC-100 and NC-200 series, is constructed to withstand the impact of heavy vehicles and damage from most chemicals such as oil and fuel. Placed over the NC-100/200, the cover is easily installed using a screw drill. After the traffic study is complete, remove the cover and it is ready for use on another installation.

11 in. x 8 in. x 0.7 in.  
(279 mm x 203 mm x 17.8 mm)



WWW.QTTINC.COM



Quixote Transportation Technologies, Inc.  
518 University Drive • Uniontown, Pennsylvania 15401  
Tel: (724) 438-8750 • Fax: (724) 438-8769  
Toll Free: (800) 346-2025  
www.qttinc.com

## HDM SOFTWARE

Index	Id	Location	Street	City	State	Lane	Start Date	Start Time
1	1163	1ST STUDY	RAMP	CENTERVILLE	PA	RIGHT LAN	07/29/98	12:00 AM
2	1011	2ND STUDY	RAMP	CENTERVILLE	PA	LEFT 40 W	07/29/98	12:00 AM
3	306	3RD STUDY	TOWARDS BROWNSVILLE	GRINDSTONE	PA	STRAIGHT	07/29/98	12:00 AM
4	1253	RT 40 EAST	FROM OLD RT 40 BRN	GRINDSTONE	PA	STRAIGHT	07/29/98	12:00 AM
5	1090	FROM OLD RT 40 BRN	RT 40 EAST TO LIGHT	GRINDSTONE	PA	TURN AT 5	07/29/98	12:00 AM
6	1275	RT 40 WEST	TURN TO 166	GRINDSTONE	PA	STOP LIGHT	07/29/98	12:00 AM
7	688	RT 40 WEST	STRAIGHT TOWARD BR	GRINDSTONE	PA	STRAIGHT	07/29/98	12:00 AM
8	691	TOWARD GRINDSTONE	RT 40 WEST EXIT	GRINDSTONE	PA	S/RT	07/29/98	12:00 AM
9	1251	RT 40 EAST NEAR PG22	RT 40 EAST NEAR PG22	GRINDSTONE	PA	RIGHT	07/29/98	12:00 AM
10	1251	RT 40 EAST NEAR PG22	RT 40 EAST NEAR PG22	GRINDSTONE	PA	RIGHT	07/29/98	12:00 AM
11	672	NEW RT 40 TOWARD GR	RT 40 WEST TOWARD	GRINDSTONE	PA	LEFT	07/29/98	12:00 AM

DISTRIBUTED BY: